

# JARGY CO., LTD.

## Test Report

Model :[CBL-D302MBSWB-15m](#)

Ver : 1.0

Date : 2017/11/24

Camera Brand Name : [XIMEA](#)

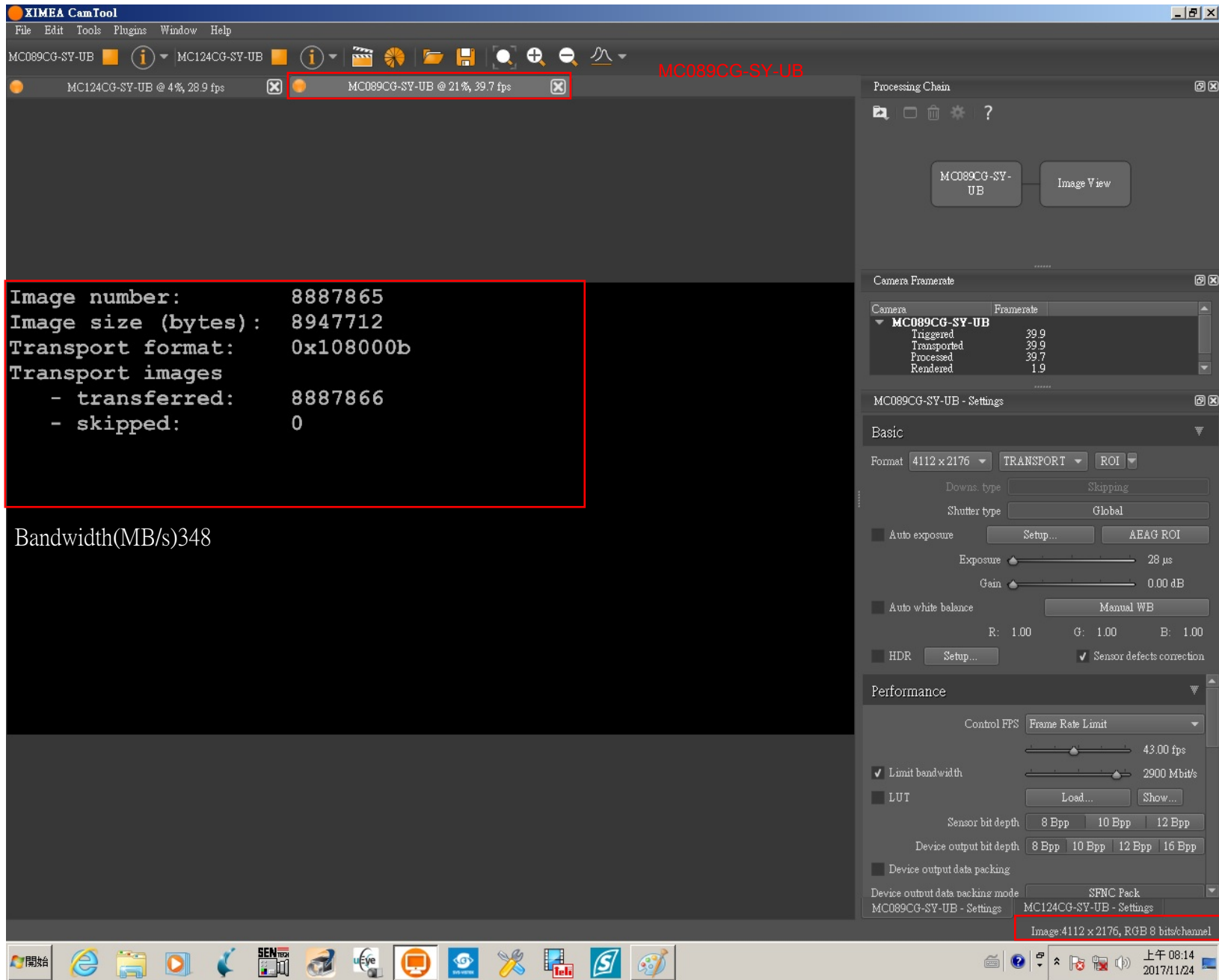
### Test Platform

Type	USB3 CAM Control System		
Model	Advantech AIIS-1440		
OS	Windows 7 Pro 64-bit		
CPU	Intel Core i7-3770		
HDD	SATA III 500GB		
RAM	DDR3 16GB		
<a href="#">USB 3.0</a>	<a href="#">Dedicated controller 4 Ports (uPD720202)</a>		


Tested Camera : [MC089CG-SY-UB](#) (4112 x 2176, 8.9MP, 43fps, 384MB/s) + [MC124CG-SY-UB](#)(4112 x 3008, 12MP, 31fps, 383MB/s)

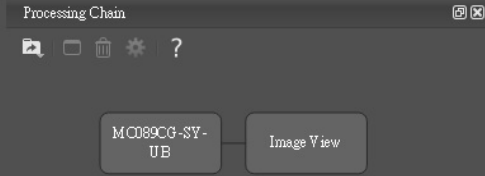
Tested time :[61h](#)





```
Image number:      8887865
Image size (bytes): 8947712
Transport format:  0x108000b
Transport images
- transferred:    8887866
- skipped:        0
```

Bandwidth(MB/s)348



Camera Framerate

Camera	Framerate
MC089CG-SY-UB	
Triggered	39.9
Transported	39.9
Processed	39.7
Rendered	1.9

MC089CG-SY-UB - Settings

Basic

Format: 4112 x 2176 | TRANSPORT | ROI

Downs. type: Skipping

Shutter type: Global

Auto exposure: Setup... | AEAG ROI

Exposure: 28 μs

Gain: 0.00 dB

Auto white balance: Manual WB

R: 1.00 | G: 1.00 | B: 1.00

HDR: Setup... |  Sensor defects correction

Performance

Control FPS: Frame Rate Limit

43.00 fps

Limit bandwidth: 2900 Mbit/s

LUT: Load... | Show...

Sensor bit depth: 8 Bpp | 10 Bpp | 12 Bpp

Device output bit depth: 8 Bpp | 10 Bpp | 12 Bpp | 16 Bpp

Device output data packing:

Device output data packing mode: SFNC Pack

MC089CG-SY-UB - Settings | MC124CG-SY-UB - Settings

Image: 4112 x 2176, RGB 8 bits/channel

